



REYADA

MARINE SERVICES

Contact Us

Bahrain

Tel : (973) 1361 6755

Fax: (973) 1362 6755

Sales: (973) 26145452

P.O.Box 75319 Al Jufair

Saudi Arabia

Tel/Fax : (966) 3 8824531

Sales: (966) 551046066

P.O.Box 70378 Khobar 31952

Info@Reyada-me.com

www.Reyada-me.com



CHAIR-SYSTEMS

NEC PHILIPS
NEC PHILIPS UNIFIED SOLUTIONS



OUR SERVICES

- Bulkheads, Windows, Doors and Hatches
- Cables, Hoses and Accessories
- Communications Systems and Equipment
- Computers, Displays, Consoles and Workstations
- Controls and Ship Automation
- Corrosion, Cathodic Protection, Coatings and Insulation
- Events and Publications
- Fleet, Vessel and Crew Management Software

- Navigation and Satellite Communications
- Outfitting, Interiors and Furnishings
- Sealants and Adhesives
- Security
- Shipyard, Port and Terminal Equipment
- Survival, Safety and Protection
- Tanks, Tank Cleaning and Repair

BULKHEADS, WINDOWS, DOORS AND HATCHES

B-class doors

Product range

- B-15 Single Leaf -accommodation and interior doors
- B-15 dB Single Leaf -accommodation doors
- B-15 Double Leaf -interior doors
- B-15 Service Single Leaf -interior/service doors

Fire class

Regulations and fire test according to SOLAS IMO Res. MSC 61(67) Annex 1 Part 3 and Annex 2, IMO A.754(18) for B-class division.

C-class doors

Product range

- Bathroom and wardrobe doors
- Swing doors
- Special hinged and sliding interior doors
- All doors as standard or WM Light version

Fire class

C-class. Materials according to IMO Res. MSC 61(67) Annex 1 Parts 1, 2 and 5



CABLES, HOSES AND ACCESSORIES

Product range, all halogen free

- LKM-HF: Very light power cable
- LKSM-HF: Power cable with copper screen
- LKMSM-HF: Power cable with double sheath and copper screen
- RFE-HF: Light pair twisted telecommunication cable with copper screen, individually and/or collectively screened
- Above cables are also available in fire resistant (FR) types



COMMUNICATIONS SYSTEMS AND EQUIPMENT

Customizable IP & Digital Communications Terminals

We Are Providing NEC Philips has a new line of customizable IP and digital modular terminals. UNIVERGE DT700/DT300 supports large, medium and small-sized communication systems. More than just telephones, they support instant messaging and presence functionality, all visible on an enhanced user interface.

Their modular design means users can start with a basic model and increase the number of standard speed-dial keys, or replace the standard speed-dial pad with an LCD screen. A standard handset can also be replaced by a Bluetooth handset, allowing the user to roam about the working area freely.

Theses terminals allow for up to 8,000 combinations to fit almost any operational needs, and provide:

- Scalability and customization
- SIP support
- Investment protection
- XML open-interface support
- Intuitive interfaces
- Menu-driven soft key functions
- Easy-access function keys



COMPUTERS, DISPLAYS, CONSOLES AND WORKSTATIONS

Custom LCD marine displays

We Are Providing High quality of computers, displays consoles & workstations As well as manufacturing a range of standard marine monitors including head mount, rack mount and large format displays, KME has the ability to design and custom build to any requirement. All products have international safety and EMC approvals, and form, fit and function policies guarantee long-term support and service.

Marine-approved displays

KME's marine-approved displays have been specifically designed to withstand the harsh maritime environment and many are certified by independent test houses to meet the stringent demands of IEC 60945, the international standard for maritime navigation and radio communications equipment and systems.

Marine monitors can also be designed to comply with electronic chart display information systems (ECDIS), ABS and MIL-STDs, and are sealed from IP65 upwards.

Available features for LCD marine monitors

KME's marine LCD monitor range provides a wide variety of solutions for the maritime industry. Optional enhancements include advanced deep dimming 2000:1, slow scan legacy signal (multi-scan) which offer non-standard video signals acceptance, AC / DC power supply, enhanced vibration and shock resistance, video buffer (multi-drop) and touch-screen capability.

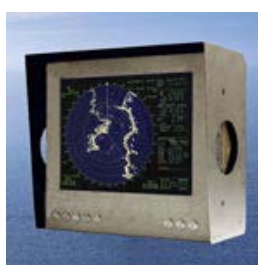
Transflective and sunlight-viewable marine displays

The marine industry is reliant on the best-quality equipment available to keep crew and craft safe in demanding environmental conditions, and that is why KME has developed Helioview™ technology..

Utilizing transflective technology to eradicate glare from the sun and enable near-perfect daylight viewing, KME has, in Helioview, provided a solution to both protect the screen from the elements without losing any of the viewing quality, and reduce the power consumption to improve the reliability.

LCD for CRT replacement monitors

Now that the CRT era has ended, CRT monitors are no longer being manufactured. Along with standard LCD screens, KME also offers LCD for CRT replacement monitors that are designed to fit into existing CRT chasses and are physically and mechanically compatible with the existing CRT monitors.



CONTROLS AND SHIP AUTOMATION

Submersible hydrostatic level probes

We provide high manufacture a wide range of hydrostatic level probes.

The Model SGE-25 is a submersible, analogue, compact transmitter designed for level measurement of liquids. It features:

- Range from 0m-1m to 0m-500m H2O (fixed range)
- Output of 4mA-20mA or 0V-10V
- Hastelloy diaphragm and housing 316L
- Poliurethane or Teflon cable
- ATEX and DNV certificates



Smart, compact transmitter level probe

The Model SGE-25Smart is a smart, compact transmitter level probe designed for level measurement of liquids. The probe allows for remote configuration of many parameters e.g. zeroing, span adjustment, damping setting and inversion of output. Remote configuration is available via a handheld communicator or a PC with RAPORT-01 software. It features:

- Range from 0m-0.8m to 0m-100m H2O (adjusted by end-user)
- Output of 4mA-20mA +Hart, Profibus PA
- Hastelloy diaphragm, housing 316L (wetted parts in tantalum optional)
- Poliurethane or Teflon cable
- Remote zero and span adjustment
- ATEX and DNV certificates



Smart level probes

The Model APC-2000 ALW/SG is a smart level probe designed for level measurement of liquids. The probe consists of a submersible sensor connected with a cable to a remote transmitter.

The transmitter is equipped with a local display and panel buttons allowing local adjustment of many parameters, e.g. zeroing, span adjustment, damping setting and inversion of output. Remote configuration is also available via a handheld communicator or a PC with RAPORT-01 software.

Features include:

- Range from 0m-0.8m to 0m-100m H2O (adjusted by end-user)
- Output of 4mA-20mA +Hart
- Hastelloy diaphragm and 316L stainless-steel housing
- Poliurethane or Teflon cable
- Remote and local zero and span adjustment
- Local display
- ATEX and DNV certificates



Pressure / level transmitters

The Model PCE-28 is an analogue compact pressure transmitter. The transmitter is available in any range from 10mbar to 1,000bar. Equipped in a diaphragm seal, it can be used as a level transmitter in open tanks. It has a wide range of process and electrical connections, and holds ATEX and DNV certificates.

The Model APC-2000ALW is a smart compact pressure transmitter. The transmitter is available in any range from 1mbar to 1,000bar. Equipped in a diaphragm seal, it can be used as a level transmitter in open tanks, and has a wide range of process connections.



The transmitter is equipped with a local display and panel buttons, allowing local adjustment of many parameters, e.g. zeroing, span adjustment, damping setting and inversion of output. Configuration is also available via a handheld communicator or a PC with RAPORT-01 software. The transmitter holds ATEX and DNV certificates.

Differential pressure / level transmitters

The Model PRE-28 is an analogue compact differential pressure transmitter. The transmitter is available in any range from 10mbar to 25bar. Equipped in a diaphragm seal, it can be used as a level transmitter in pressured tanks. A wide range of electrical connections are available, and the transmitter holds ATEX and DNV certificates.

The Model APR-2000ALW is a smart compact differential pressure transmitter. It is available in any range from 0.2mbar to 25bar. Equipped in a diaphragm seal, it can be used as a level transmitter in pressured tanks. The transmitter is equipped with local display and panel buttons, allowing local adjustment of many parameters, e.g. zeroing, span adjustment, damping setting and inversion of output. Configuration is also available via a handheld communicator or a PC with RAPORT-01 software. The transmitter holds ATEX and DNV certificates.

Level switches

ERH type level switches are used for point-level detection in all type of vessels. Operation is possible without a power supply, and side or top-mounting stainless-steel wetted parts are available.

CORROSION, CATHODIC PROTECTION, COATINGS & INSULATION

MarineLine 784 - high chemical resistance

We provide MarineLine it's more chemical resistance than other coatings, including Phenolic Epoxies, zinc and stainless steel. It is resistant to all 131 of the most frequently carried cargoes, whilst stainless steel is resistant to 97, phenol epoxy is resistant to 35 and zinc silicate is resistant to 22.

Furthermore, MarineLine is resistant to all IMO cargoes including the following: methanol; EDC; acrylonitrile; fatty acids; super phosphoric; caustics; MTBE; MEA; methylene chloride and sodium hydroxide.

The MarineLine provides superior resistance to the following: acids, alkalies and solvents; thermal shock (-40°C to +200°C); flex stressing; wear and abrasion; product absorption; impact and undercreep corrosion.

Benefits of MarineLine coatings and linings

- Superior bond strength and adhesion
- Maximum cargo flexibility and product cycling
- Repairable
- Can be applied to pitted corroded steel
- Can carry food grade cargoes
- Maintains product purity
- Virtually non-absorbant

Problems with phenolic epoxy marine coating

Compared to APC's MarineLine product, epoxy coatings present several deficiencies. They absorb cargoes to high levels (depending on cargo), and have a relatively slow cargo absorption rate. Epoxy coatings release absorbed cargo very slowly. Furthermore, small traces may be retained by the epoxy coating, contaminating the next cargo.



Problems with zinc silicate coating for cargo tanks

A zinc silicate coating absorbs cargo quickly. It retains oil-like cargoes, endangering a subsequent cargo contamination. Zinc silicate coatings limit back hauling capability, and are not resistant to acids, caustics, acid-containing oils or urea.

Problems with stainless-steel coatings for marine transport

Stainless steel is four to five times more expensive than MarineLine coatings, and does not resist chloride-containing cargoes. Furthermore, stainless steel is attacked by salt water, has high maintenance costs and is more difficult to clean than MarineLine coatings.

MarineLine coating - decreased downtime

MarineLine's virtual non-absorbency (absorption only takes place after 45 days immersion) results in decreased downtime with faster tank cleaning. The MarineLine coating provides a faster drying time, and does not normally require the use of any cleaning chemicals. With less slops, it also ensures less environmental problems.

MarineLine - smooth cargo and tanker coating

MarineLine is 2½ times smoother than phenolic epoxy, five times smoother and 50 times less slippery than stainless steel:

- MarineLine - surface roughness = 0.7Ra - 0.9Ra; slipperiness = 34.0dynes/cm
- Phenolic Epoxy - surface roughness = 1.8Ra - 2.1Ra; slipperiness = 80dynes/cm
- Stainless steel - surface roughness = 3.2Ra-4.5Ra; slipperiness = 1,800dynes/cm

MarineLine offers:

- Easy, safer and faster cleaning and drying
- No contamination from cargo to cargo



FLEET, VESSEL AND CREW MANAGEMENT SOFTWARE

LOADMASTER™ - LOADING COMPUTERS FOR ONBOARD OPERATION

We Are Providing Kockum Sonics, has been making loading computers for more than 30 years. LOADMASTER X5 is the world's most common system, counting more than 8,000 installations. We have developed superior solutions for any type of vessel with functions aimed at increasing onboard efficiency and maximising safety during cargo operation. The hull description is made in 3-D. LOADMASTER X5 has a user interface that is unparalleled in user friendliness. It is designed to be simple enough for the junior ship officer to operate, but it still provides a full range of powerful opportunities for experienced users. With the type-approved LOADMASTER X5 you will be in possession of the most powerful and versatile cargo planning and stability software available.

Kockum Sonics includes the former companies Kockumation, LOADMASTER International AB and Transtema. The Loadrite loading computer also belongs to the Kockum Sonics group.



LEVELMASTER™ - BUBBLE GAUGING SYSTEM AND WATER INGRESS DETECTION SYSTEM

Kockum Sonics has a long history in the field of tank level and draught gauging. We have the most efficient, accurate and maintainable system available. We deliver systems such as the simple dial-type system up to multi-monitor systems at prices that leave the competition running.

LEVELMASTER is a flexible level-gauging system that works with any pressure, bubble gauging, radar or temperature transmitter as well as with any automation system. Our LEVELMASTER WIM system fulfils SOLAS XII/12 rules for water ingress detection for bulk carriers.

LEVELMASTER H8, our electro pneumatic system for tank level and water ingress detection, is perfect for new buildings and retrofits. This system is type-approved by all the major classification societies.



SHIPMASTER™ - CARGO AND BALLAST AUTOMATION SYSTEM

Perfect for new buildings as well as retrofits, Kockum Sonics' SHIPMASTER system is very flexible, based on standard off-the-shelf components and very easy to operate, configure and maintain. By combining our LOADMASTER and LEVELMASTER with SHIPMASTER you get a complete system from one source further adding to the system maintainability in the future.

SHIPMASTER cargo and ballast automation provides a complete overview and control of the loading and discharging of tanks. Pumps, valves and other equipment are easily controlled and monitored on screen from a SHIPMASTER PC and the dedicated ship officer keyboard.



TYFON™ - THE WORLD'S MOST FAMOUS SHIP HORN

From classic honks to complete acoustic systems, a Kockum Sonics whistle is not only a high-quality design; it also contains the experience of more than one million TYFON™ installations. Audibility is not simply determined by the strength of sound emanating from the whistle - much more is entailed to overcome absorption, distortion and local noise. This quality is the result of more than 80 years of development. The TYFON™ fulfils all current IMO and national authority regulations.

SONIC CLEANING - ACOUSTIC CLEANING SYSTEMS

Kockum Sonics pioneered the sonic cleaning technology and offers a uniquely complete range of audible SONOFORCE® and infrasound INSONEX® emitters, used in boilers and heat exchangers to improve the heat transfer to the boiler tubes and in SCRs to keep the catalyst cells clean.



NAVIGATION AND SATELLITE COMMUNICATIONS

Admiralty standard nautical and thematic charts

We are provider Motion Smith, the UKHO's unrivalled series of over 3,300 standard nautical charts which meet the requirements of professional, commercial and recreational navigation in accordance with SOLAS regulations, ensuring safe navigation at sea. Weekly Admiralty Notices to Mariners contain information which enables the mariner to keep his charts and books published by UKHO up-to-date for the latest reports received.

Singapore nautical charts and dual badge charts

In addition to their Singapore nautical charts, the Maritime and Port Authority of Singapore (MPA) and the UKHO have also jointly produced a series of nautical charts called the dual badge charts.

Australian and New Zealand water navigational charts

The Australian Hydrographic Service (AHS) is responsible for providing Australia's national charting service under the terms of the UN Safety of Life at Sea (SOLAS) Convention and the Navigation Act. LINZ is the New Zealand's hydrographic authority that is responsible for providing official hydrographic information for navigational purposes.

Japanese water nautical charts

The Japanese Coast Guard produces nautical charts to cover the Japanese coasts, Pacific and Indian Oceans and their adjacent seas.

Digital charts / publications

Motion Smith provides a wide range of digital charts / publications.

AVCS

The Admiralty Vector Chart Service (AVCS) brings together electronic navigational charts (ENCs) from national hydrographic offices around the world and new ENC coverage produced by UKHO in co-operation with foreign governments to provide comprehensive, official, worldwide coverage.

AWCS

Developed by the UK Hydrographic Office (UKHO), AWCS will enable shore-based users to view charts instantly and effortlessly. The charts can be accessed from any internet-connected PC providing users with immediate access to worldwide charts.

ARCS

ARCS charts are exact digital copies of the world-leading BA charts. ARCS complements the British Admiralty paper chart series to provide first class electronic navigation that greatly improves safety.

ENCs

ENCs are official vector-based electronic charts, designed to meet the relevant chart carriage requirements of the SOLAS convention.

TADS

Transas Admiralty Data Service (TADS) delivers official chart data and information directly to your ECDIS and helps you prepare for paperless navigation.

Admiralty Digital Publications

Admiralty Digital Publications provide industry leading Admiralty nautical publications in digital form including Admiralty Totaltide, a digital list of lights and radio signals volume 6.



ECDIS

Transas' Navi-Sailor 4000 ECDIS multifunction display is a flexible and redundant solution providing the mariner with a convenient task-oriented environment. The workstation can be equipped with software such as ECDIS, radar, conning, chart assistant utility and an SPOS weather module. This gives the mariner the ability to switch between applications at the touch of a button.

Charts and publications inventory management

The service provided by Motion Smith ensures that vessels are supplied with the latest updated charts and publications on-board a vessel in order to satisfy SOLAS requirements, which include:

- Automatic supply of new editions of charts and publications relevant to vessels' trading areas
- Automatic supply of weekly BA charts correction tracings and NTMs
- Maintenance of vessels' charts / publications inventory databases on our system
- Provision of relevant lists, reports and certificates to vessels / offices
- Audit of charts and publications on-board a vessel

OUTFITTING, INTERIORS AND FURNISHINGS

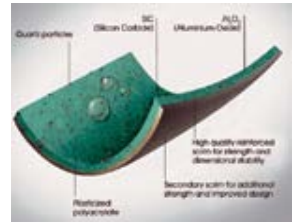
Fully approved, lightweight, slip resistant marine flooring

We are providing Gallium is ideal for areas where slips and trips could occur, such as service corridors and emergency stairwells, helping to prevent accidents. In addition, it is safe in the event of fire because it is fully compliant with the stringent IMO FTP regulations on smoke and toxicity.

Unique polyacrylate formulation for fire resistant flooring

Gallium's unique polyacrylate formulation easily surpasses the IMO MED requirements for Part 2 (smoke and toxicity) and Part 5 (fire) of the FTP code. Altro's own testing standards are also very stringent.

After manufacture, every batch of Gallium is independently tested for fire, smoke and toxicity. This voluntary procedure – which exceeds the requirements of the IMO MED – ensures 100% compliance and gives operators the confidence that they are meeting their duty of care to passengers and crew.



PVC-free marine flooring

Simon Andrews, maritime sales manager for Altro Transflor, says: "The rules on how interior finishings on ships were tested for fire and smoke performance changed as a result of a fire on The Scandinavian Star in 1990, which claimed the lives of 158 people."

"Fire at sea is one of the greatest fears and, unlike a land-based building; escape from a ship may not be easy. Confusion caused by smoke plus loss of footing due to ship movement can only increase concerns. Any floor covering which offers excellent slip resistance even when wet, whilst at the same time reducing potentially dangerous toxic emissions caused by fire, must surely be the way forward."

Safety flooring for ships

Gallium is a genuine safety flooring. It provides excellent slip resistance due to aggregates of silicon carbide, aluminium trioxide and quartz scattered through the wear layer.

"Many operators still choose aesthetics over functionality by installing smooth products," says Simon Andrews. "This is an invitation for people to make compensation claims caused by slip and trip injuries."

"Gallium is slip resistant even when wet, which means that during an evacuation, when the ship may be listing and the floor wet, it provides superb grip. It can also be used in all types of wet areas such as galleys and showers, and is completely water resistant. In addition it has an integral bacteriostat – altrosan™ – which helps prevent the build-up of bacteria and cross contamination."



Marine interior bathroom equipment

We are providing Banco's ship interior bathroom equipment can be installed in passenger and cruise ships, naval vessels and offshore units. Bathroom utilities include mirror door cabinets (with one, two, three or four doors), light fixtures, floor pans, doors, waste bins, folding benches, towel shelves and swing walls.

Mirror cabinets are available in two types: mirror cabinets with a mirror door from the bottom to the very top, or mirror cabinets with integral light. They are made from steel or stainless steel and are painted with powder paints.



Light fittings and floor pans for ships

Light fittings produced by our company are designed for use in places where the IP44 standard of protection is required. Fittings are adapted to work with the frequency of 50Hz or 60Hz and 230V or 115V and they can be mounted directly on the walls, ceilings or to other metal furniture. Our light fittings can be supplied with different types of shaver socket (European, American and British sockets, etc.) with separate transformer.

Our floor pans are mainly produced according to customer specifications and are made from steel, aluminum and stainless steel. They can be used in offshore and onshore wet units.

Shipboard furniture

Banco manufactures a wide variety of painted or laminated furniture made from steel, aluminum or stainless steel, specifically created for use on-board ships. They are designed to meet the specific requirements of marine conditions such as non-combustibility, durability, easy handling and economy of space and weight. We supply berths (single and double), Pullman-type berths, sofas, all kinds of lockers and wardrobes, desks, sideboards, tables and many other types of furniture that can be found in ship cabins.



Helmsman chairs

The popular and highly functional Nautic helmsman chair offers high comfort to the user. All functions can be operated while seated. The chairs are designed according to the ergonomic and technical requirements of leading classification companies. It is also available as an 'ergo-package' with lumbar support and comfort seat cushion for special demands. A special version of this seat has been tested at the German armed forces' test centre with shocks up to 120G.

A highly ergonomic, professional helmsman chair of brand-new design, the Nautic Pro corresponds to the highest standards of ergonomics, comfort and functionality.

Features include:

- High comfort backrest with integrated headrest
- Foldable / angle-adjustable comfort armrests
- Backrest adjustment
- 360° swivel mechanism
- Aluminium balcony tilt and slide doors
- BSS' aluminium balcony tilt and slide doors are of special construction with an externally



Running sliding-door leaf. In each position, the door leaf can be operated by a rotating handle, operational inside and outside the cabin suite. Support-mounted rollers on top of the door leaf operate it easily.

A magnetic contact seal and special connecting profiles guarantee optimal use of the air conditioning in the cabin suite. The doors will be tension-free, mounted and sealed to the hull of the ship, and conform to the fire protection requirements. Insulating glass conforms to DIN standard 614, and units with a maximum thickness of 40mm can be installed.

FLAME-RETARDANT DECORATIVE FABRICS

drapilux stands for the link between form and function. It is now 25 years since we set new standards with the development of a new generation of flame-retardant fabrics. In addition, our innovations – drapilux air, drapilux bioaktiv and drapilux akustik – have meant that we have succeeded in providing decorative fabrics, which improve the quality of lifestyles in a way unknown to date.

An unparalleled collection of samples means combinations of more than 1,500 stylish designs that are kept up-to-date by our drapilux sales force. This extensive and permanently up-to-date portfolio means you're planning security is guaranteed and is the key to success.



HIGH-TECH FLAME-RETARDANT DECORATIVE FABRICS

We are providing high manufacture flame-retardant decorative fabrics, using the brand fibres of Trevira CS, for the entire commercial segment as well as for private property. We also provide intelligent fabrics: drapilux air, drapilux akustik and drapilux bioactive.

DRAPILUX AIR – NEUTRALISER FOR AIR POLLUTANTS AND SMELLS

drapilux air is a combination of flame resistant Trevira CS fibre and air-recreating air technology. Pollutants and smells are neutralized by the catalytic effect. A room's air can be continuously cleaned day and night.

Scientific studies have proven its outstanding efficiency, including the reduction of more poisonous materials. Formaldehyde is just as effectively diminished as tobacco smoke or animal smells.



CHEMICAL RESISTANT FLOOR COVERINGS FOR SHIPS

We are providing high quality of resistant flooring that convincing benefits with regard to quality and functionality, the floor coverings meet the specific demands made on floor coverings for interior use in passenger liners/ferries, cruisers, tankers, container ships, and marine ships worldwide. The following qualities make Nora floor coverings our customers' number one choice:

- Extremely long life, resulting in less frequent need of disposal
- Extraordinarily wear-resistant with anti-slip properties
- Full fire-protection properties
- Largely resistant to chemicals
- High level of footfall sound absorption
- Permanently resilient with a high walking comfort
- Anti-static: no electrostatic charge build-up from walking, thus no perceptible discharges
- Easy & economic cleaning without extra coating; extremely dense surface, thus dirt-repellent
- Environmentally compatible - no PVC, plasticizers (phthalates) and no halogens (e.g. chlorine)
- Free from asbestos, cadmium, CFCs, and formaldehyde



SEALANTS AND ADHESIVES

Sikaflex and SikaFast® adhesive bonding

We Are Providing Joints that are subject to extreme dynamic stresses require a long lasting, high strength, structural yet elastic adhesive exhibiting good gap-filling properties. Sikaflex-292, SikaFast-3161 and SikaFast-5211 are excellent examples of products with shock absorbing and vibration dampening properties highly capable of meeting the requirements of a punishing marine environment.

Sealing with Sikaflex flexible marine sealant

With its outstanding resistance to weathering and seawater, Sikaflex-291 is the perfect all-rounder; an all-purpose flexible marine sealant that bonds extremely well to all standard materials used in boat and ship construction. Its noteworthy elasticity ensures a durable long-lasting seal able to hold off water, dust, dirt, air, gasses, etc.

SHIPYARD, PORT AND TERMINAL EQUIPMENT

High quality marine fenders

We are providing the state-of-the-art facilities are designed to efficiently provide you with the highest quality, most reliable and best-value marine products in the world. The quality of our products is reflected in the combination of using only the finest raw materials, manufacturing processes and the most innovative technologies in chemical and mechanical engineering. We are highly motivated to maintain and extend our lead in this part of the marine industry.

Ocean Guard™ marine fenders and buoyancy products

We are providing Marine Fenders offers a wide array of foam-filled fendering and buoyancy products.

The Ocean Guard™ product line includes:

- Ocean Guard™ foam-filled fenders (with swivel end fittings)
- Small shipboard fenders (padeye end fittings)
- Ocean Cushion™ fenders (with chain and tire nets)
- Monopile or 'Donut' fenders (turning dolphins)
- Submarine fenders (submersible)
- Dredge pipe floatation
- Security barriers
- Mooring buoys
- Utility buoys
- Chain-through buoys
- Navigational buoys
- Marker buoys
- Scientific buoys
- Pendant buoys
- Modular buoys
- Closed-cell rigid urethane foams



Pneumatic fenders

Lightweight and easy to handle, PA pneumatic fenders float on the water so they are responsive and adaptable to the movements of ships and to tidal variations. For over 20 years, Shibata PA pneumatic fenders have had a proven record of outstanding performance.

They have been widely used for ship-to-ship berthing, mooring operations, and also for dockside and dolphin applications during loading and discharging of cargo.

Workboat fenders

Shibata fenders for workboats meet an extremely wide range of requirements. Fenders for tug boats, for example, are required to perform many arduous duties in addition to absorbing large amounts of impact energy.

Shibata workboat fenders withstand the enormous compression stresses produced immediately after the approach manoeuvres, and effectively transmit the pushing force of the tug without damage to either vessel and without energy loss. They are also designed to cope with long and continuous use under severe conditions.

Pusher-barge, ferry boat and supply boat fenders

In addition to fenders for tug boats, our product range includes fenders for pusher-barges, ferry boats, supply boats and other working vessels.

Easy-fitting fenders

The MC fender is designed to ensure easy fitting to vessel sides. Bolthole centre separation is as narrow as possible, so these fenders can be installed on narrow places like the side of a ship.

Non-frontal panel fenders

SH fenders are improved type fenders in the non-frontal panel fender series. They are specially designed to be multipurpose, high-performance fenders.

Roller fenders

Roller fenders are hollow rubber fenders designed to absorb large impacts and to provide high wear resistance. Fitted to a rotating axle, D roller fenders effectively cope with impact forces using the inherent expansion and contraction of the hollow circular rubber and by rolling in the direction of the ship's movement.



SURVIVAL, SAFETY AND PROTECTION

Marine vessel personal escape device

We are providing Marine vessels have special needs, including the requirements to achieve effective evacuation escape and rescue in a variety of scenarios. In particular, the following issues must be addressed:

- Listing - causing conventionally mounted lifeboats to become inoperative
- Smoke - affecting helicopter operations
- Entrapment - at the bow end for entry into life rafts and the bridge wings or in the event of the main means of escape being rendered inoperative

The Donut Safe land Marine personal escape control descent device is extremely effective in all these scenarios.



Photo-luminescent safety signs

We are providing Safety Sign with high quality Denfoils safety signs, with the following product range:

- Safety signs for marine and offshore applications
- Photo-luminescent self-adhesive IMO signs and marker tapes
- Photo-luminescent low-level lighting systems
- Safety awareness and training posters
- Pipeline identification marker tape to ISO 14726
- Fire and safety plan pictograms
- Safety equipment warning signs
- ISPS code signs
- Safety equipment emergency and exit signs
- Safety equipment prohibition signs
- Safety equipment mandatory signs
- Safety equipment fire signs
- Temporary tie tags
- Security and barrier tapes



Photo-luminescent adhesive vinyl signs

We are providing All photo-luminescent adhesive vinyl signs are on 3M foils, which stand for exceptionally high quality. JO Safety Sign is always testing its own materials and its product development department works intensely to make sure its products always meet necessary legislation and standards (such as DIN 67510 Part 4 VP 157-30 and DIN 67510 Part 4 VP 157-50), or even better them.

Photo-luminescent adhesive vinyl signs come with a ten-year warranty for interior applications (without direct exposure to sunlight). Other advantages include:



- Rechargeable glow-in-the-dark signs and markings
- Excellent chemical and stain resistance
- Easily cleaned
- No heavy metals or radioactive materials used in the manufacture of the product
- May be safely disposed of in a sanitary landfill or by incineration



Marine signage with very-high-brightness photo-luminescent coating

We are providing Lunaplast 2500 PC marine signage is a no-compromise solution. Virtually indestructible, it combines industry-leading brightness with very high durability, providing longevity measured in decades.

As elegant as it is durable, Lunaplast 2500 PC uniquely features a proprietary, very-high-brightness photo-luminescent coating baked on a rigid-sheet aluminium base. For additional durability and elegance, a stainless-steel base is optionally available.

Suitable for use in the most demanding environments, the outstanding aesthetics of Lunaplast 2500 PC ensures that it is also fully at home even in the most luxurious cabins.



Linethrower 250 - Self-Contained Line Throwing Device

Linethrower 250 is a self-contained line-throwing appliance that is fully compliant to the latest international SOLAS / MED and USCG legislation and meets worldwide approval standards. A solid propellant rocket is used which guarantees a highly accurate flight path – even in strong sidewinds.

It has a throwing range of >230m and is suitable for all line throwing operations at sea between vessels, ship-to-shore, shore-to-ship and shore-based rescue services.



IMMERSION SUIT FOR PERSONAL PROTECTION ON MERCHANT VESSELS

We are providing the non-insulated Ursuit® 5020 II is designed for demanding professional sea-faring conditions. Deface forces, sea rescue associations and merchant vessels in several European countries have chosen this excellent immersion suit, which is particularly ideal for open sea conditions.

Some of the many features Ursuit® 5020 II has:

- Gore-Tex® material fabric - lets vapour penetrate whilst remaining completely watertight
- Double seam construction - ensures seam will not open even when worn
- Neck seal - made from patterned 2.5mm super-stretch neoprene
- Thermal hood - 3mm neoprene, protects against cold water
- Reflective tapes, in accordance with the marine equipment directive



URSUIT® 5106 / 5108 IMMERSION SUIT

In contrast with other suits, 5106 MED has an revolutionary open light used dry zipper that makes it possible to use the suit also zipper open. The suit has same ergonomics than a normal overall.

Like the above immersion suit, this is made from Gore-Tex® fabric and has a double seal construction. The suit is equipped with several reflective tapes, which assure visibility in all conditions. These soft, durable reflective tapes have been developed by 3M in accordance with the directive on marine equipment. The suit also comes with polyurethane boots with broad fitting and strong non-slip soles.



URSUIT® BASIC - WATERPROOF, PROTECTIVE MARINE CLOTHING

Made from permeable and durable X-Tex three-layer fabric, the Basic immersion suit features the double seam construction and reflective tapes of the above suits, as well as the thermal hood, neck seal, polyurethane boots and a dry zipper that opens diagonally across the upper body, minimising the disadvantages of a heavy zipper when sitting and moving around.

LIQUID LEVEL GAUGE

We are providing the HERMetric UTImeter Gtex is a portable gas tight liquid level gauge designed for closed gauging of hydrocarbons and chemicals. The sensor is calibrated once at the factory and does not require subsequent calibration.

The temperature transducer is a RTD element. The characteristics of the RTD are stored inside the sensor. The sensor is sending true temperature values to the electronic box. Therefore changing a sensor or a cable does not require a new calibration.

The unit is used for custody transfer, inventory control measurement and free water detection on marine vessels and shore tanks. Connected to a HERMetric vapour control valve fixed on the tank, the HERMetric UTImeter Gtex avoids any gas release during operation.



Contact Us

Bahrain

Tel : (973) 1361 6755
Fax: (973) 1362 6755
Sales: (973) 26145452
P.O.Box 75319 Al Jufair

Saudi Arabia

(966) 3 882 4531
(966) 3 8824531 ex. 111
(966) 551046066
70378, Al Khobar, 31952

Info@Reyada-me.com

www.Reyada-me.com

